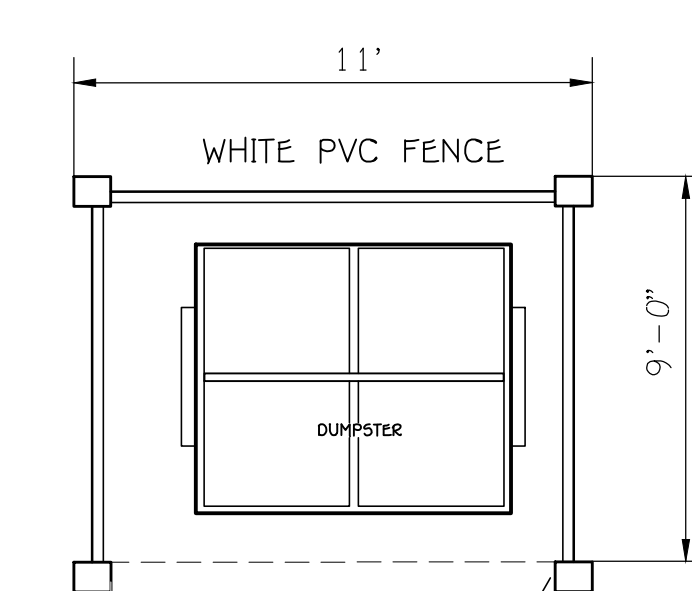
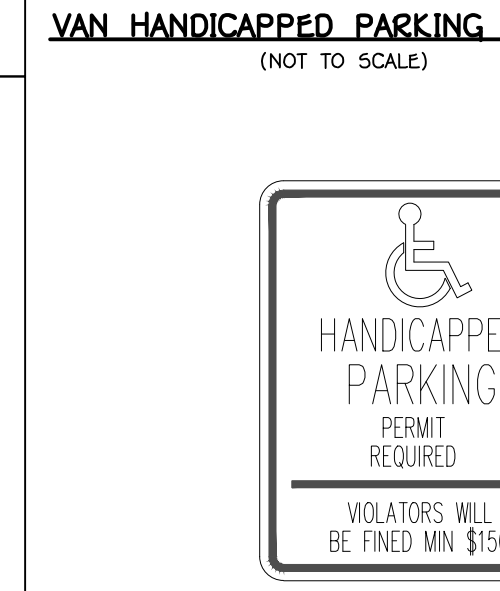
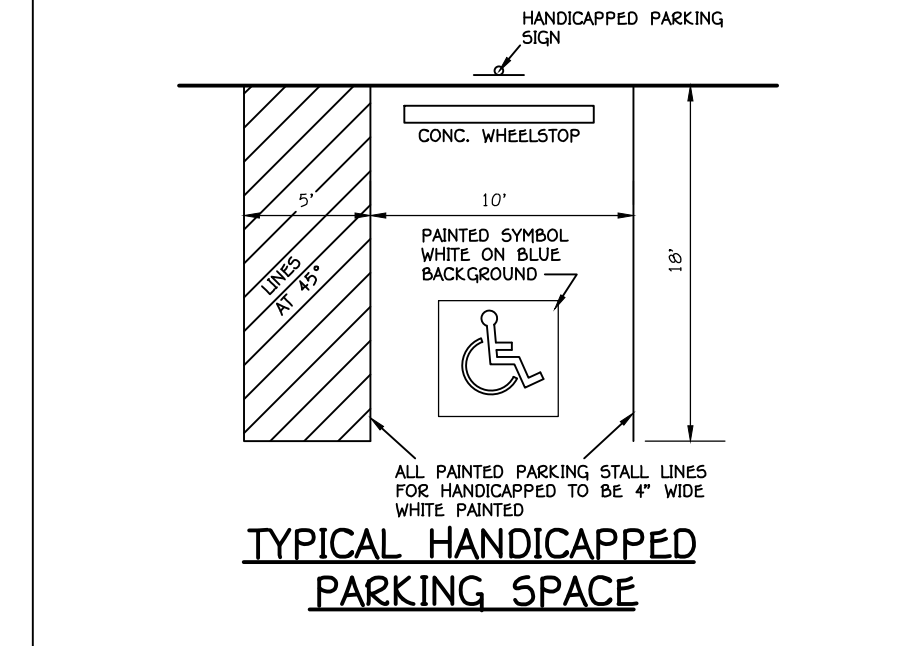
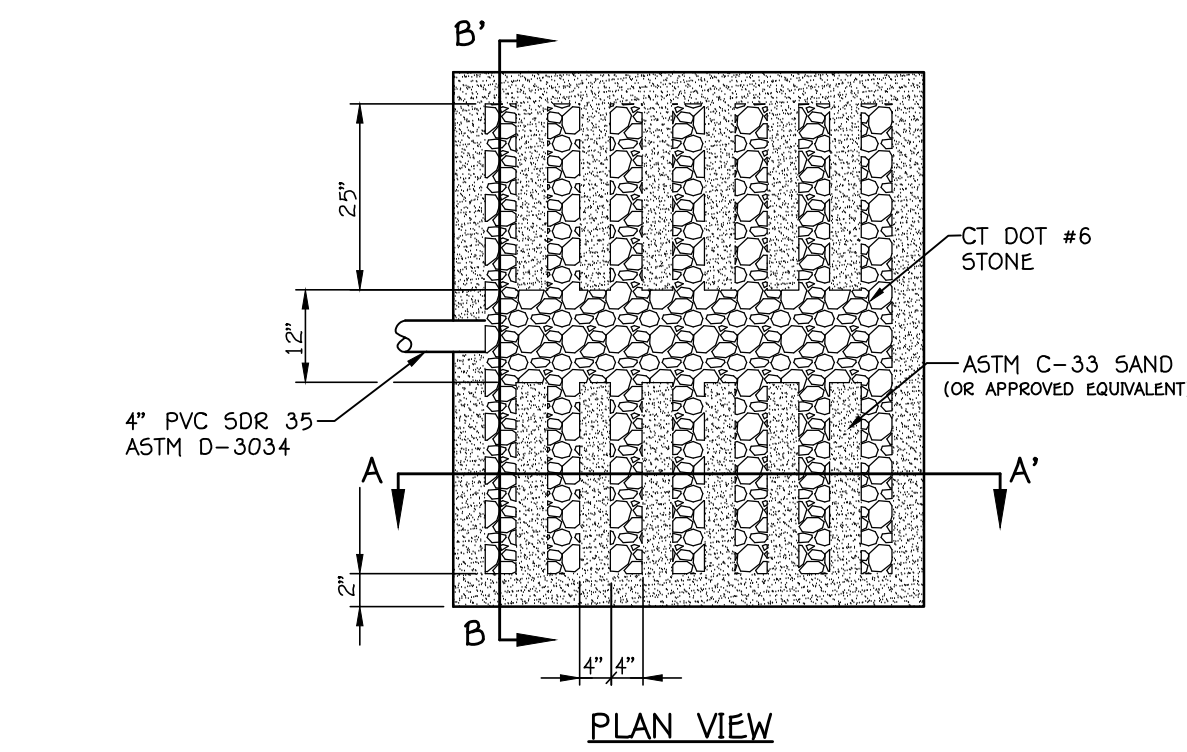
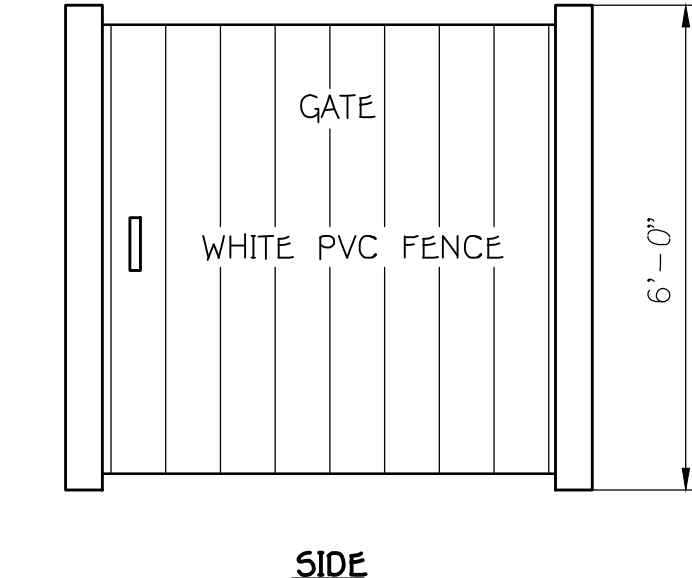
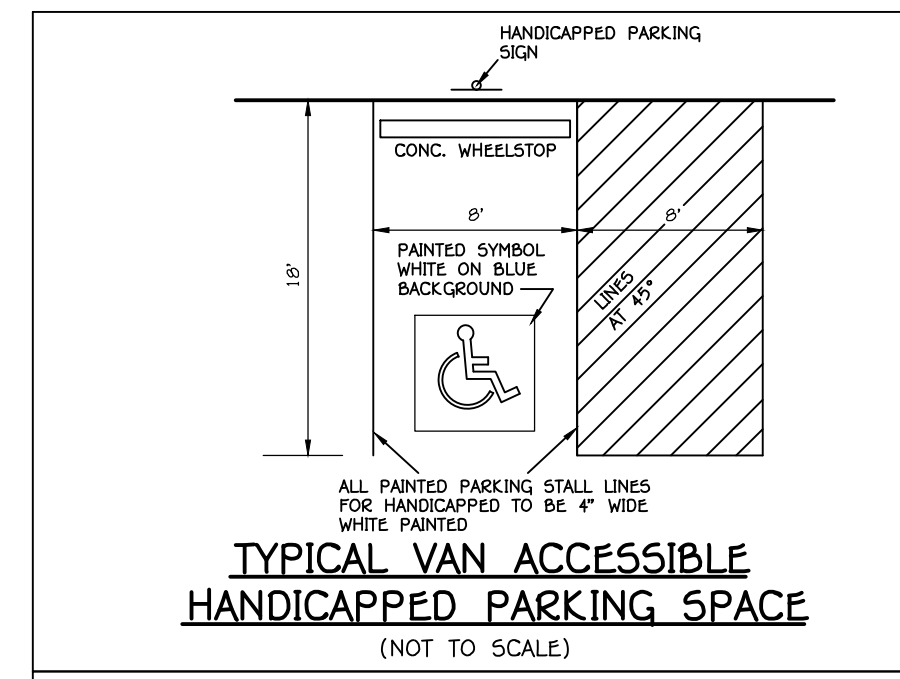
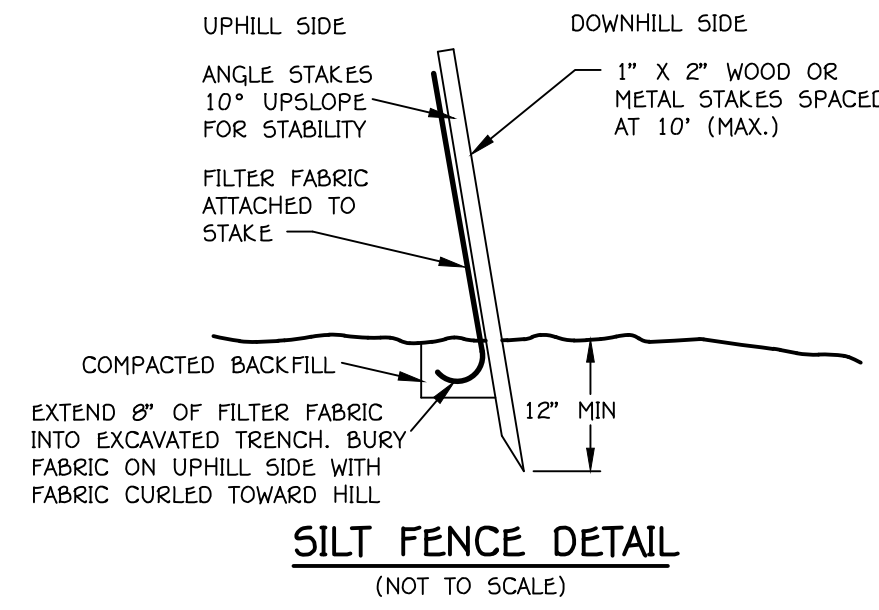
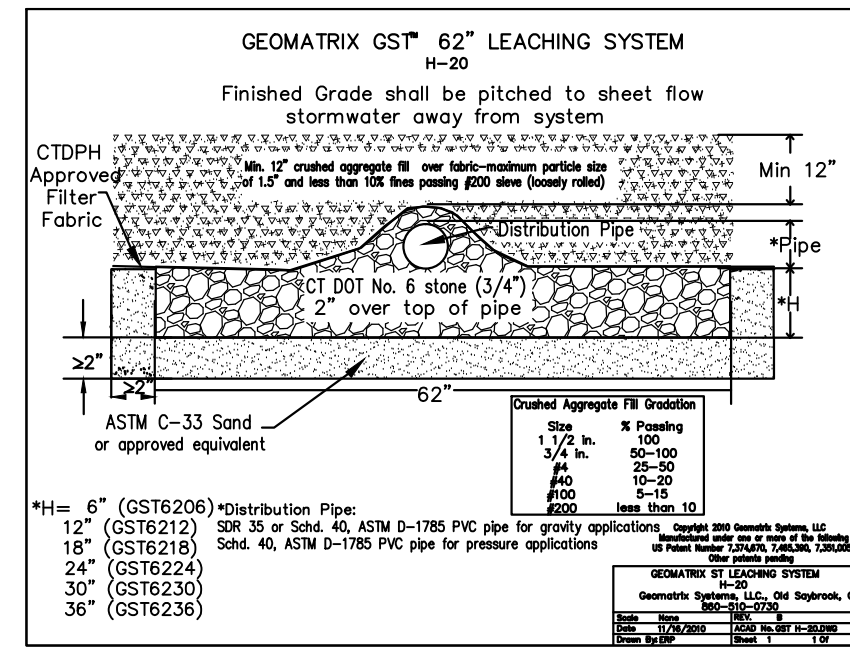


**LEACHING FIELD X-SECTION A-A**  
SCALE: 1"=20' HORIZ.  
1"=4' VERT.



**DUMPSTER ENCLOSURE DETAIL**  
(NOT TO SCALE)  
SEE SITE DEVELOPMENT PLANS FOR LOCATION.

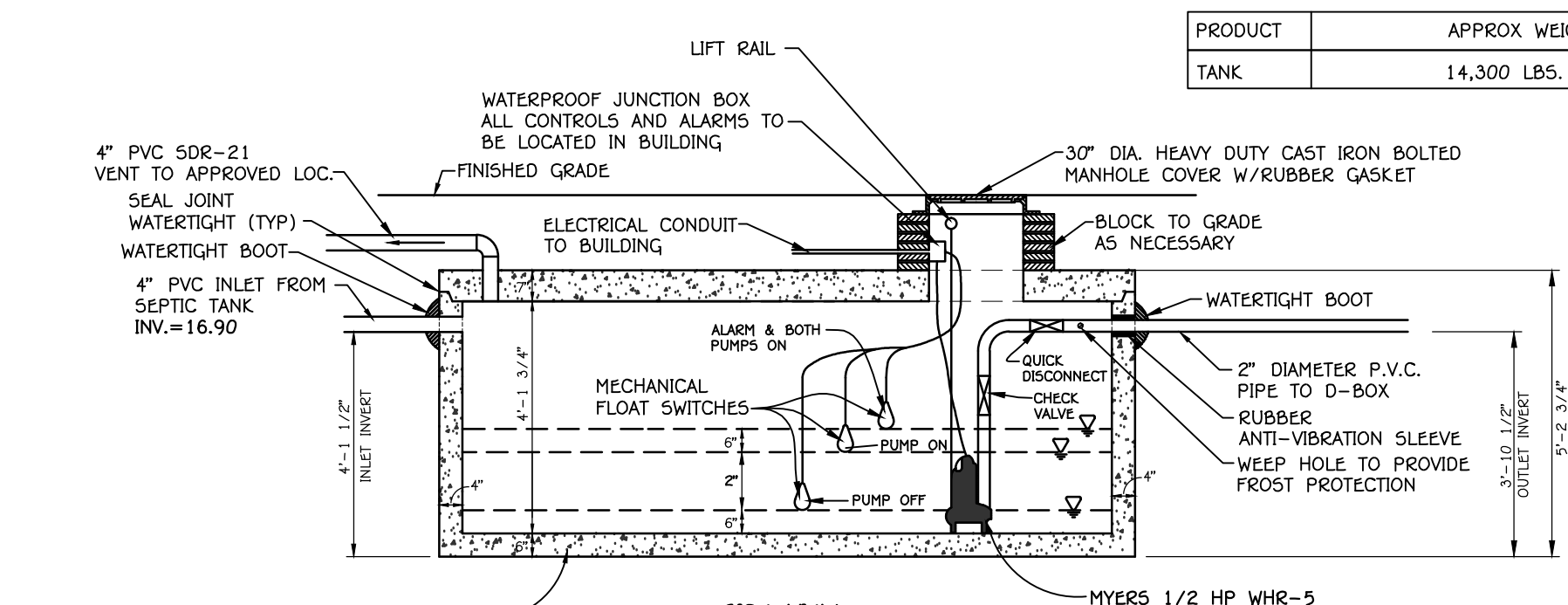
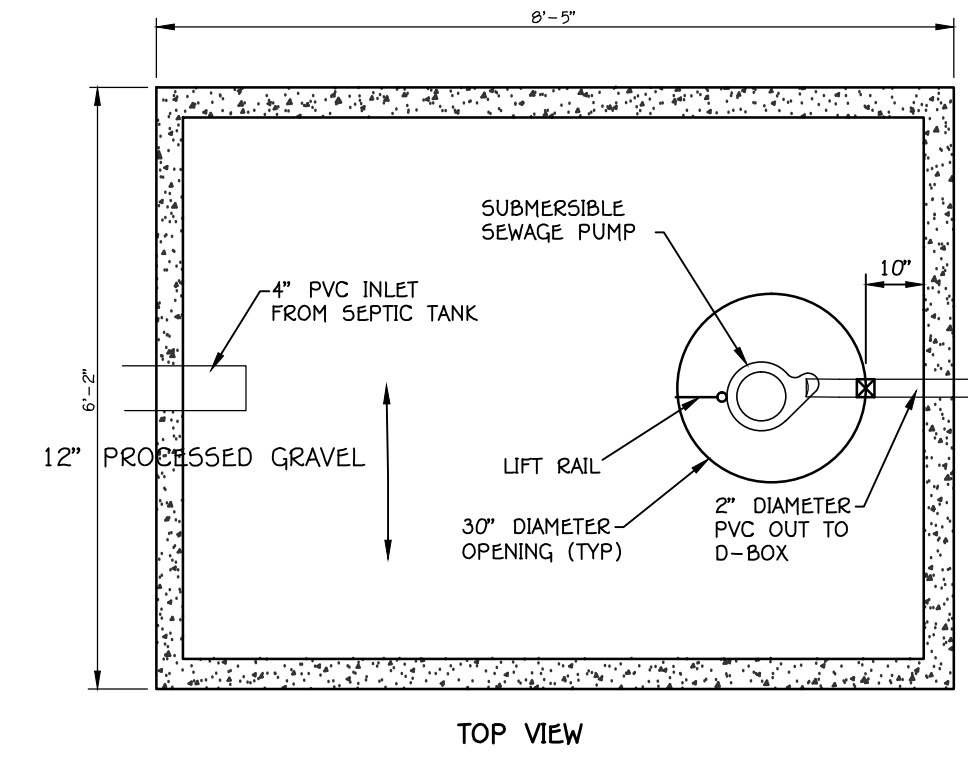
**1,000 GALLON PUMP CHAMBER**

TANK DESIGN SPECIFICATION CONFORMS TO LATEST: ASTM DESIGNATION C913

- NOTES:
1. JOINT SEALANT IS BUTYL RUBBER MASTIC TYPE SEAL THAT CONFORMS TO THE LATEST AASHTO SPECIFICATION M-198 MEETS FEDERAL SPECIFICATION 55-5-0021(210-A).
  2. PIPE INLET AND OUTLET LOCATIONS HAVE POLYLOK II PIPE SEALS, TYP. CUSTOM KNOCKOUTS CAN BE CAST ON REQUEST.
  3. WHEN SPECIFIED THE TANK EXTERIOR IS COATED WITH BAY OIL, "EBONY" OR EQUAL.
  4. WHEN SPECIFIED THE TANK INTERIOR IS COATED WITH FLOXOR EPOXY OR EQUAL.
  5. REINFORCING STEEL DEFORMED BARS CONFORM TO LATEST ASTM SPECIFICATION A615.
  6. CONCRETE COMPRESSIVE STRENGTH-4000 PSI AT 28 DAYS.
  7. METHOD OF MANUFACTURE: WET CAST.
  8. SECTIONS ARE MONOLITHIC.
  9. THE CHAMBER IS DESIGNED FOR H5-20 LOADING, W/18" OF SOIL COVER.

**WEIGHT CHART**

PRODUCT	APPROX WEIGHT
TANK	14,300 LBS.



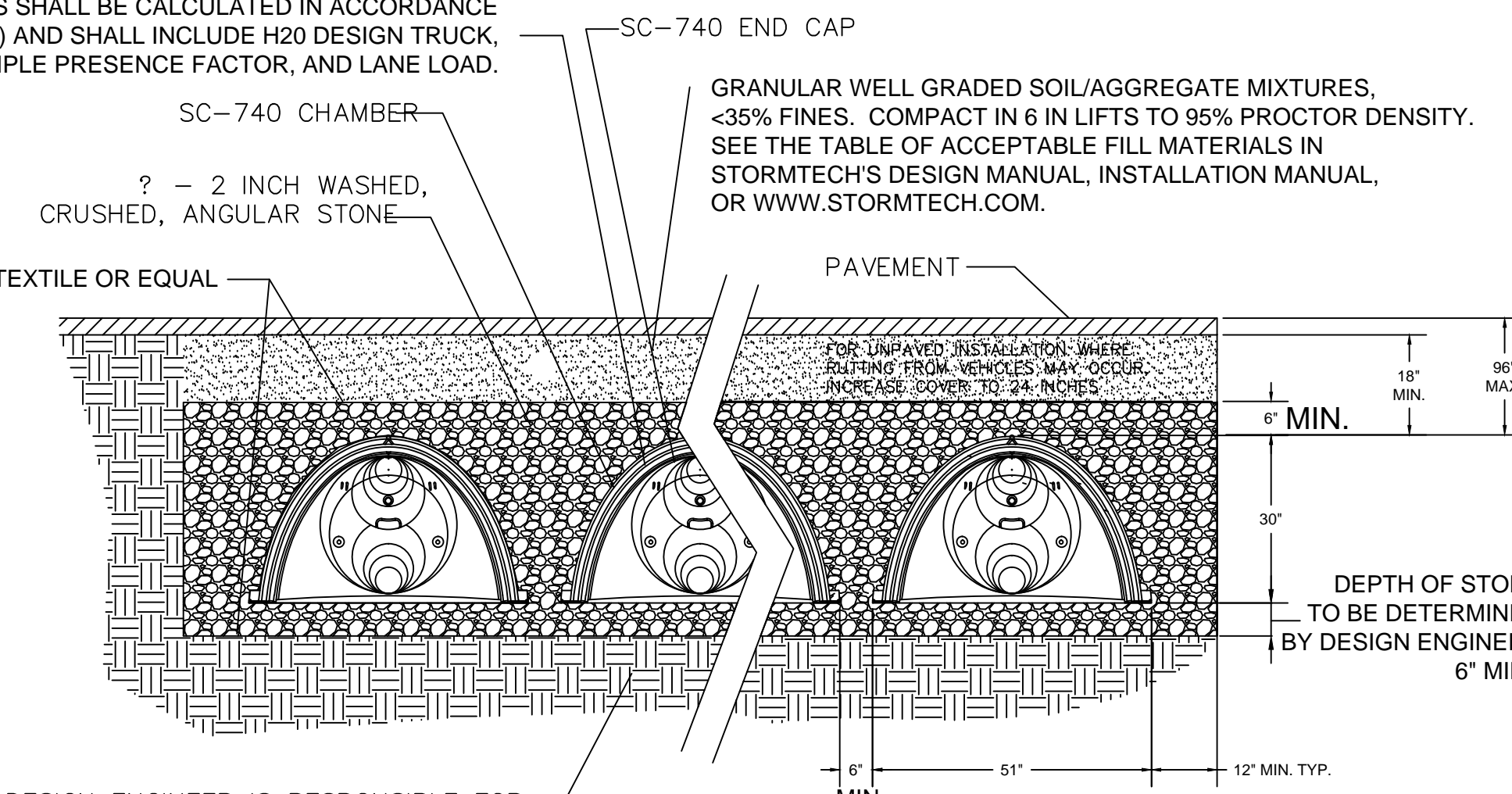
UNITED CONCRETE 1,000 GAL. PUMP CHAMBER (8'5\"/>

**1,000 GAL. H-20 PUMP CHAMBER DETAIL**  
(NOT TO SCALE)

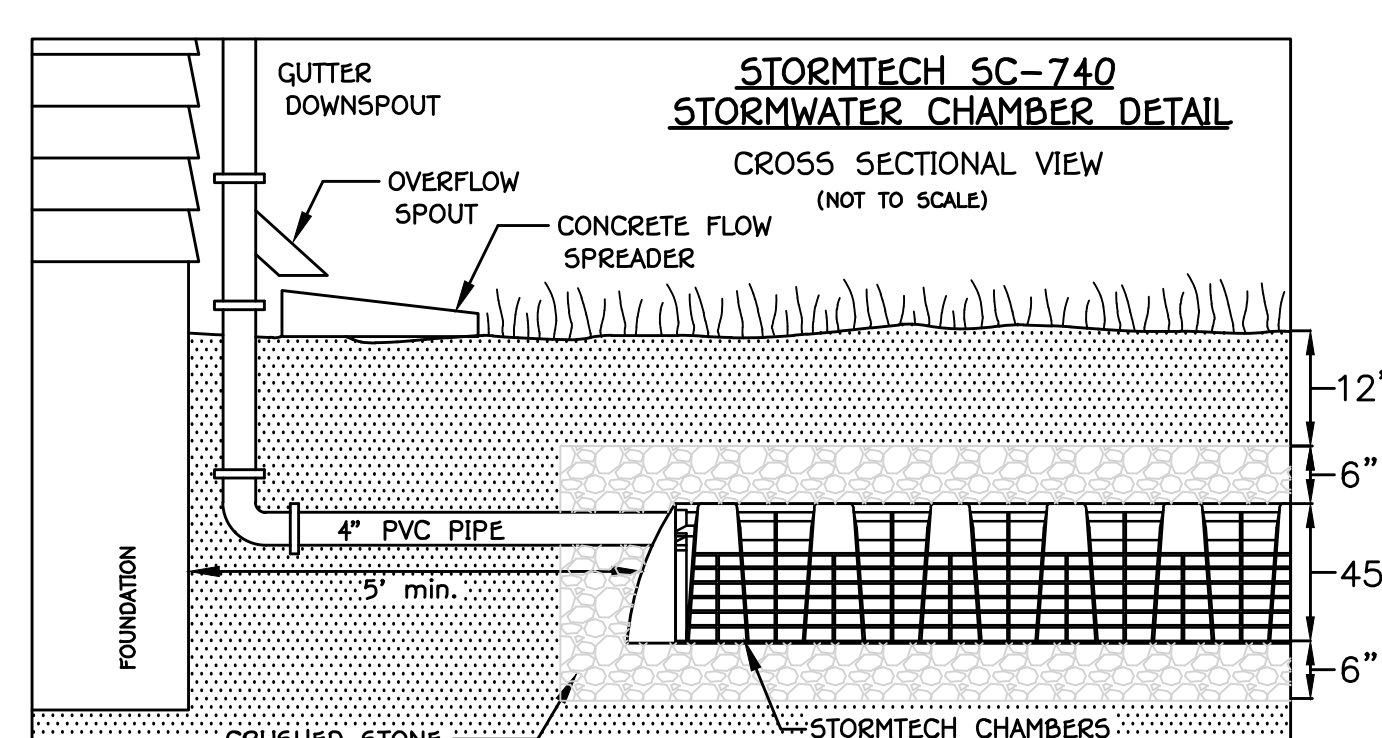
**ROOF LEADER INFILTRATION SYSTEM**

TOTAL ROOF AREA = 5,000 SF AFTER ADDITION  
1\"/>

CHAMBERS SHALL MEET THE DESIGN REQUIREMENTS AND SAFETY FACTORS SPECIFIED IN SECTION 12.12 OF THE LATEST EDITION OF THE AASHTO LRFD BRIDGE DESIGN SPECIFICATIONS. LOADS SHALL BE CALCULATED IN ACCORDANCE WITH SECTION 3 (AASHTO) AND SHALL INCLUDE H20 DESIGN TRUCK, IMPACT FACTOR, MULTIPLE PRESENCE FACTOR, AND LANE LOAD.



DESIGN ENGINEER IS RESPONSIBLE FOR ENSURING SUITABILITY OF SUBGRADE SOILS  
STORMTECH SC-740 CHAMBER TYPICAL CROSS SECTION



- NOTES:
1. PROVIDE STORMTECH CHAMBERS TO CAPTURE 1\"/>

STUART J. FAIRBANK CONN. P.E. #20206	LAND & MARINE ENGINEERING SURVEYING PLANNING	ANGUS McDONALD GARY SHARPE & ASSOCIATES, INC. SINCE 1966 P.O. BOX 808, 283 BOSTON POST ROAD OLD SAYBROOK, CONNECTICUT 06476 TEL. (860) 388-4971 FAX (860) 388-3982	SITE DEVELOPMENT PLAN PREPARED FOR <b>JAMES COTE</b> 1238 BOSTON POST ROAD (U.S. ROUTE 1) WESTBROOK, CONNECTICUT DATE: SEPTEMBER 09, 2021 SCALE: 1"=20' DRN MCM [CKD] APP'D SHEET 2 of 2 JOB NO. 963615A REVISIONS:
---	--	--	---